

**Canon**

*PowerShot Pro70*  
DIGITAL CAMERA

## Software Guide



---

This guide explains the installation method and features of the software for loading and processing images shot with a Canon PowerShot Pro70 Digital Camera on a computer.

# READ CAREFULLY BEFORE USING!

## CANON SOFTWARE LICENSE AGREEMENT

IMPORTANT-READ THIS AGREEMENT BEFORE USING THE SOFTWARE ON THE CD-ROM IN THIS BOX! BY USING THE SOFTWARE, YOU ARE DEEMED TO AGREE TO BE BOUND BY THIS AGREEMENT.

This legal document is a license agreement between you and Canon Inc. ("Canon"). IF YOU DO NOT AGREE TO THE TERMS AND CONDITIONS OF THIS AGREEMENT, DO NOT USE A SOFTWARE PROGRAM ON THE CD-ROM AND A USER MANUAL IN THIS BOX (COLLECTIVELY THE "SOFTWARE") AND PROMPTLY RETURN THE SOFTWARE TO THE PLACE WHERE YOU OBTAINED THE SOFTWARE FOR A REFUND.

In consideration of the right to use the SOFTWARE, you agree to abide by the terms and conditions of this Agreement.

1. **LICENSE:** Canon grants you the non-exclusive right to use the SOFTWARE only on a single computer. You may physically transfer the SOFTWARE from one computer to another one; provided that the SOFTWARE is used on only one computer at a time. You shall not install or use the SOFTWARE on a network, multiple CPU, multiple site arrangement, or any other hardware configuration where the SOFTWARE is accessible to more than one CPU or to more than one user.

YOU SHALL NOT ASSIGN, SUBLICENSE, RENT, LEASE, LOAN, CONVEY, OR OTHERWISE USE, TRANSFER, COPY, TRANSLATE, CONVERT TO ANOTHER PROGRAMMING LANGUAGE, ALTER, MODIFY, DECOMPILE OR DISASSEMBLE THE SOFTWARE, IN WHOLE OR IN PART, EXCEPT AS EXPRESSLY PROVIDED IN THIS AGREEMENT.

2. **BACK-UP COPY:** You may make one copy of the SOFTWARE solely for a back-up purpose, or copy the SOFTWARE onto the permanent storage device (e.g. a hard disk) of your computer and retain the original for a back-up purpose. Any other copying of the SOFTWARE is a violation of this Agreement. You must reproduce and include the copyright notice on the back-up copy.
3. **SUPPORT AND UPDATE:** Canon is not responsible for maintaining or supporting you to use the SOFTWARE. No updates, fixes or support will be made available for the SOFTWARE.
4. **LIMITED WARRANTY AND WAIVER OF INDEMNIFICATION:** It is your responsibility to choose and maintain the SOFTWARE. Canon will not guarantee uninterrupted service or absence or correction of errors. Therefore, the SOFTWARE is licensed to you on an "AS IS" basis without warranty of any kind. The CD-ROM storing the SOFTWARE is warranted only against defective material under normal use for a period of ninety (90) days from the date you purchased the same as evidenced by a receipt or other evidence. The limited warranty does not apply if the failure of the CD-ROM resulted from accident, abuse or misapplication of the SOFTWARE and shall not extend to anyone other than the original user of the SOFTWARE.

CANON, CANON'S SUBSIDIARY, DEALER OR DISTRIBUTOR DISCLAIMS ALL WARRANTIES, INCLUDING ANY WARRANTY OF MERCHANTABILITY OR FITNESS FOR A PARTICULAR PURPOSE, WITH RESPECT TO THE SOFTWARE EXCEPT FOR THE WARRANTY FOR THE CD-ROM STATED ABOVE.

NEITHER CANON, CANON'S SUBSIDIARY, DISTRIBUTOR NOR DEALER IS LIABLE FOR ANY CONSEQUENTIAL OR INCIDENTAL LOSS OR DAMAGE, INCLUDING LOSS OF PROFITS, EXPENSE OR INCONVENIENCE, WHATSOEVER CAUSED BY OR ARISING OUT OF THE SOFTWARE OR THE USE THEREOF.

CANON, CANON'S SUBSIDIARY, DISTRIBUTOR OR DEALER SHALL HAVE NO OBLIGATION TO INDEMNIFY YOU AGAINST ANY CLAIM OR SUIT BROUGHT BY A THIRD PARTY ALLEGING THAT THE SOFTWARE OR THE USE THEREOF INFRINGES ANY INTELLECTUAL PROPERTY OF SUCH THIRD PARTY.

5. **TERM:** This Agreement is effective upon your using the SOFTWARE and remains in effect until expiration of all copyright interests in the SOFTWARE unless earlier terminated. You may terminate this Agreement by destroying the SOFTWARE. This Agreement will also terminate if you fail to comply with any of the terms of this Agreement. In addition to enforcement of Canon's legal right, you must then promptly return to Canon, Canon's Subsidiary or Canon's distributor or dealer, or destroy the SOFTWARE and you shall not use the SOFTWARE thereafter.
6. **U.S. GOVERNMENT RESTRICTED RIGHTS NOTICE:** The SOFTWARE is provided with RESTRICTED RIGHTS. Use, duplication or disclosure is subject to restrictions as set forth in either subparagraph (c)(1)(ii) of the Rights in Technical Data and Computer software clause at DFARS 252.227-7013 or subparagraph (c)(1) and (2) of the Commercial Computer Software Restricted Rights Clause at FAR 52.227-19, as applicable.
7. **SEVERABILITY:** In the event that any provision of this Agreement is declared or found to be illegal by any court or tribunal of competent jurisdiction, such provision shall be null and void with respect to the jurisdiction of that court or tribunal and all the remaining provisions of this Agreement shall remain in full force and effect.
8. **ACKNOWLEDGEMENT:** BY USING THE SOFTWARE, YOU ACKNOWLEDGE THAT YOU HAVE READ THIS AGREEMENT, UNDERSTOOD IT, AND AGREE TO BE BOUND BY ITS TERMS AND CONDITIONS. YOU ALSO AGREE THAT THIS AGREEMENT IS THE COMPLETE AND EXCLUSIVE STATEMENT OF AGREEMENT BETWEEN YOU AND CANON CONCERNING THE SUBJECT MATTER HEREOF AND SUPERSEDES ALL PROPOSALS OR PRIOR AGREEMENTS, VERBAL OR WRITTEN, AND ANY OTHER COMMUNICATIONS BETWEEN THE PARTIES RELATING TO THE SUBJECT MATTER HEREOF. NO AMENDMENT TO THIS AGREEMENT SHALL BE EFFECTIVE UNLESS SIGNED BY A DULY AUTHORIZED OFFICER OF CANON.

# Introduction

Thank you for purchasing a Canon PowerShot Pro70 Digital Camera. A number of software tools have been bundled with the camera to enable you to load images onto a computer for retouching and editing. These tools are all you need to enjoy connecting with a computer and retouching, editing and organizing your images.

Please read this guide and the Hardware Guide to get the most out of your new PowerShot Pro70 and the wonderful world of high-quality digital imaging.

- Please refer to the guides that accompanied your Windows or Macintosh operating system for instructions on their basic operation.
- This guide explains how to connect to a computer and load images with the driver software. For instructions past this stage, such as image retouching, please refer to the quick start guides for each individual software program, which have been provided as electronic manuals (PDF files that can be read with Adobe Acrobat Reader).

## Disclaimer

1. While every effort has been made to ensure that the information contained in this guide is accurate and complete, no liability can be accepted for any errors or omissions. We respectfully request that you notify the nearest Canon Customer Support Help Desk if you have any questions or suggestions about this guide. Canon Inc. reserves the right to change the specifications of the hardware and software described herein at any time without prior notice.
2. No part of this guide may be reproduced, transmitted, transcribed, stored in a retrieval system, or translated into any language in any form, by any means, without the prior written permission of Canon Inc.
3. Canon Inc. makes no warranties for damages resulting from corrupted or lost data due to a mistaken operation or malfunction of the software or equipment.

## Trademark Acknowledgments

- Canon and PowerShot are trademarks of Canon Inc.
- Adobe, Acrobat and Photoshop are trademarks of Adobe Systems Incorporated.
- CompactFlash is a trademark of SanDisk Corporation.
- IBM is a registered trademark of International Business Machines Corporation.
- Macintosh, Power Macintosh, QuickTime and QuickTime VR are trademarks of Apple Computer Inc.
- Microsoft, Windows and Windows NT are registered trademarks of Microsoft Corporation in the U.S. and other countries.
- PhotoImpact is a trademark of Ulead Systems, Inc.
- Other names and products not mentioned above may be trademarks or registered trademarks of their respective companies.

# Table of Contents

List of Supplied Accessories for Connecting to a Computer	3
Optional Accessories	3
Software Overview	4

## **Chapter 1** Loading Images onto a Windows Computer 5

The Software Programs	6
Loading Images from a Digital Camera onto a Computer	6
Composing Slide Shows on a Computer	6
Searching for Images Using the Shooting Date/Time as a Clue	7
Merging Several Images to Create a Panorama	8
Organizing Large Numbers of Images Intuitively	8
Image Processing: From Retouching to Web Site Design	9
Installing the Software	10
Computer System Requirements	10
Installation Procedures	10
Connecting the Camera to the Computer to Load Images	13
Connecting to the Computer	13
Precautions to Observe while Connected	14
Loading Images with TWAIN-Compliant Application Programs	14
Loading Images Directly from a CF Card	20
Installing the CF Card	20
Precautions to Observe while Connected	21
Loading Images with TWAIN-Compliant Application Programs	21
How to Read the Quick Start Guides for Application Programs	22

## **Chapter 2** Loading Images onto a Macintosh Computers 23

The Software Programs	24
Loading Images from a Digital Camera onto a Computer	24
Searching for Images Using the Shooting Date/Time as a Clue	24
Merging Several Images to Create a Panorama	25
Installing the Software	26
Computer System Requirements	26
Installation Procedures	26
Connecting the Camera and Computer to Load Images	28
Precautions to Observe while Connected	29
Loading Images Directly from a CF Card	30
Precautions to Observe while Connected	30
Loading Images into Application Programs	31
How to Read the Quick Start Guides for Application Programs	33

# Supplied Accessories for Connecting to a Computer

The following items, which are bundled with your PowerShot Pro70 Digital Camera, are required to connect to a computer.

- PC Interface Cable IFC-100PC
- Macintosh Interface Cable IFC-100MC
- PowerShot Pro70 Solution CD-ROM
- Software Guide (this guide)

## Optional Accessories

---

The following optional item is available for use with the PowerShot Pro70 to load images onto a computer. Purchase it according to your needs.

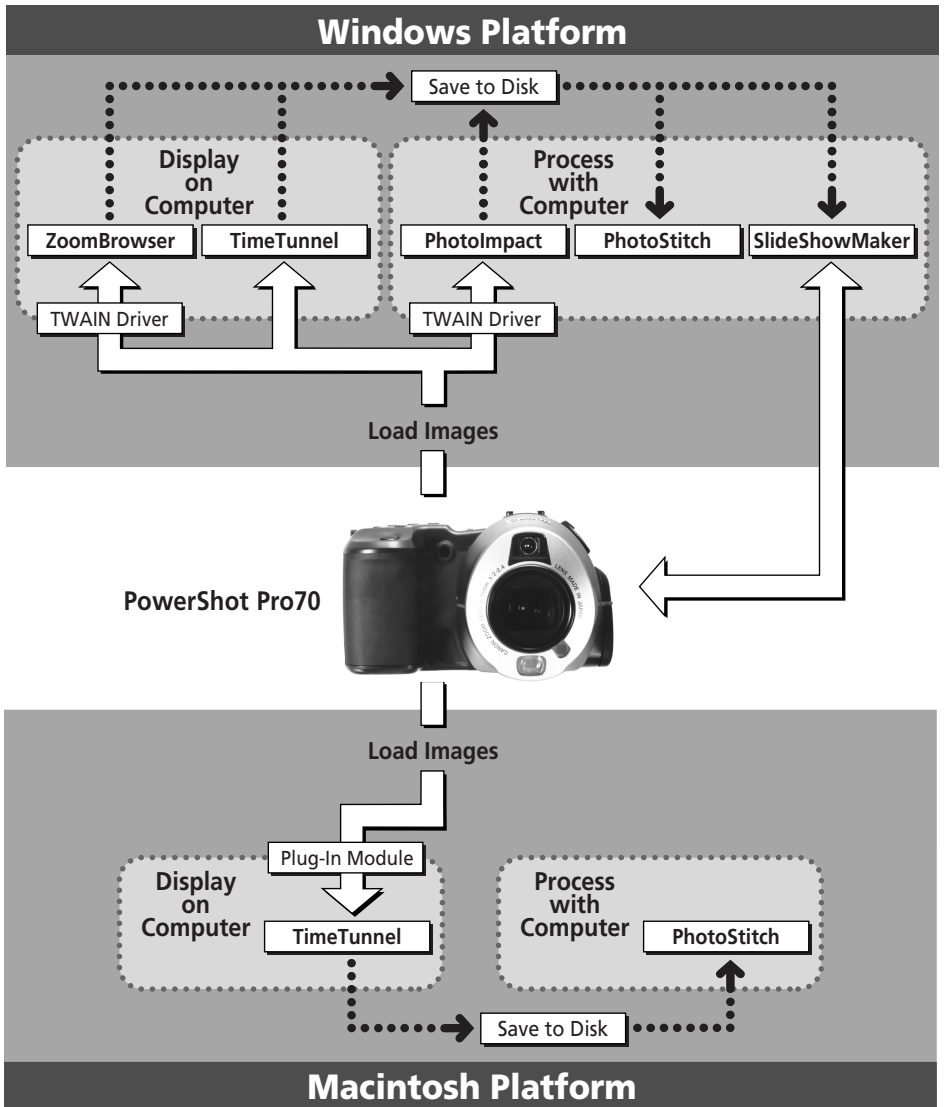
### PCMCIA Card Adapter

This device enables you to insert a CF card into a PC card slot or reader. Purchase this item if your computer is equipped with a PC card slot or reader to achieve even faster image transfers.



# Software Overview

The PowerShot Solution CD-ROM contains application programs featuring a host of capabilities with which to process images, ranging from data transfer to advanced image retouching. Install the programs as required to satisfy your individual needs.



## Chapter 1

# Loading Images onto a Windows Computer

This chapter introduces the application programs for Windows that are contained on the PowerShot Solution CD-ROM. In addition to explaining how to install the software, it describes the techniques for loading images onto the computer.

# The Software Programs

## Loading Images from a Digital Camera onto a Computer

### TWAIN Driver

Driver software is required to transfer image data from your camera so that it can be processed and edited on your computer. The PowerShot Pro70 software package includes a TWAIN Driver for Windows that serves this purpose.

The TWAIN Driver can be used with various TWAIN-compliant application programs, such as PhotoImpact and ZoomBrowser, to load images directly into the application program from the camera.

Use the TWAIN Driver in conjunction with your TWAIN-compliant applications. PhotoImpact and ZoomBrowser are two such programs bundled with the PowerShot Pro70.

TWAIN is an acronym for a set of standards used to transfer graphic data between computers and digital cameras, scanners or other digital imaging devices. The TWAIN Driver supplied with your camera conforms to these standards.



## Composing Slide Shows on a Computer

### PowerShot Utilities SlideShowMaker

PowerShot Pro70 is equipped with a slide show function that permits the selective viewing of the images shot by the camera. SlideShowMaker is an application program that allows you to edit slide shows on a computer running Windows. The program makes it simple to specify slide order and edit existing slide shows.



SlideShowMaker also simplifies the process of copying slides to the camera that have been created or retouched with a computer, a feature that is handy for making sophisticated slide show presentations complete with title screens. After editing the slide show, you can copy it back to the camera for presentation.



## Searching for Images Using the Shooting Date/Time as a Clue

### PowerShot Utilities TimeTunnel

"I'd like to find that photo. Lets see... Maybe it was last summer..."

"I want to find that picture of that scene we saw on the third or fourth day of our trip two years ago..."

TimeTunnel is the browser utility that makes such searches possible. When you shoot an image with your PowerShot Pro70, it automatically records the date and time of shooting. TimeTunnel uses this data to organize and display tiny versions of your images, called thumbnails, in chronological order on rings so that you can easily search and find specific images. As you watch the images scroll past on the screen, you receive the impression of being in a time tunnel. When you find the target thumbnail, all you need do is double-click it to view the original image.



---

## Merging Several Images to Create a Panorama

---

### PhotoStitch

Ever tried to capture a panoramic scene with a camera only to find it doesn't fit a single frame? Or had difficulty photographing a document so it fits a single frame and can still be read?

PhotoStitch is the powerful application program that remedies these situations, allowing you to capture an entire scene and assemble legible photographic documents. Using PhotoStitch, you can create one large image by merging several images or documents photographed in horizontal or vertical sequences, or in a matrix format. PhotoStitch is also furnished with an electronic manual, the PhotoStitch Shooting Guide, with hints on how to shoot to obtain better images for merging.



---

## Organizing Large Numbers of Images Intuitively

---

### ZoomBrowser

ZoomBrowser is a digital image database program with powerful features for organizing and searching the image files that soon proliferate as you discover the joys of digital imaging. File names alone do not reveal much about images. That's where ZoomBrowser shines. It permits you to display all of the registered images simultaneously on the screen. Use the zoom function to expand and shrink sets of images to instantly sort through them visually. It's almost like having all of your images spread out on a table so that searching and organizing becomes easy. ZoomBrowser is also equipped with a range of advanced search functions.



## Image Processing: From Retouching to Web Site Design

### Ulead PhotolImpact

“Since I have entered the delightful world of digital imaging with my PowerShot Pro70, why stop at just viewing my images? Why not try some special effects?” If you have shared these thoughts, the PhotolImpact photo retouching application program is your answer. It features an abundant array of special effects and retouching, processing and editing functions that can be performed with a single click using such innovations as the ‘EasyPalette.’ Discover how to broaden your horizons in digital imaging with PhotolImpact, which even makes web site design easy with its deceptively simple but far-reaching capabilities.



# Installing the Software

Installing the software contained on the PowerShot Solution CD-ROM is the first procedure to complete before you can start loading images onto your computer.

## Computer System Requirements

---

Your computer system must satisfy the following requirements to operate the bundled software.

Operating System:	Windows 95, Windows 98 or Windows NT 4.0
CPU:	486DX2/66 MHz or higher (Pentium recommended)
RAM:	24 MB or more (32 MB or more recommended) 32 MB or more recommended for Windows NT
Free Disk Space:	TWAIN Driver 2.3: 15 MB or more ZoomBrowser 1.1: 30 MB or more SlideShow Maker 1.2: 20 MB or more TimeTunnel 2.3: 30MB or more PhotoStitch 2.2: 40 MB or more PhotoImpact 4.0: 130 MB or more
Ports:	Standard RS-232C interface (PowerShot Pro70) D-SUB 9-PIN connector
Monitor:	640 x 480 pixels, 256 colors or more (1,024 x 768 pixels, 32,000 colors or more recommended)
Sound Card:	Required to play sound annotations

- CD-ROM Drive is required for software installation.
- QuickTime Version 3.0 or later is required to save PhotoStitch images in QuickTime VR format.

## Installation Procedures

---

The following programs can be installed from the PowerShot Solution CD-ROM.

- **TWAIN Driver 2.3**  
Install this program if you intend to use PhotoImpact, ZoomBrowser or other TWAIN-compliant application programs to load images from the camera.
- **Slide Show Maker 1.2**
- **TimeTunnel 2.3**

- **PhotoStitch 2.2**
- **ZoomBrowser 1.1**
- **Ulead PhotoImpact 4.0**
- **Adobe Acrobat Reader 3.0**

Install this program if it is not already installed on your computer to read the electronic manuals for each application program (p. 12).

**1.** Start your computer. If you have any application programs running, close them now.

**2.** Place the CD-ROM in the computer drive.

The list of software on the disk will automatically display. Use this window to select the programs you wish to install.

- The install window will not automatically display if the CD-ROM drive's auto run function is turned off. If this occurs, use the following procedures to display the window.
  1. Double-click the [My Computer] icon on the Windows desktop to open its folder, and double-click the [CD-ROM] icon.
  2. Double-click the [Setup] icon.

**3.** Click the names of the programs you wish to install.

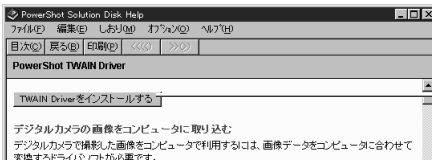


Click the programs you wish to install.

Click here when you have completed your selection.

A window with an explanation of the programs you have chosen will display.

- Click the button at the top of the window bearing the program name.



Click here to install the program.

Installation will start.

- To proceed without installing the software, click the [Return to Software List] button, which will return you to the window in Step 3.
- When the installation finishes, the explanatory window will display again. Click the [Return to Software List] button at the bottom of the window.



Click here.

- Repeat steps 3 to 5 to install the required programs.
- When you have finished installing programs, click the [Exit] button at the bottom of the window to close the installation window.

### About Adobe Acrobat Reader

An electronic manual for each program that explains the basic functions and procedures has been provided as a PDF file that can be read by Adobe Acrobat Reader 3.0. If this program is not already installed on your computer, click [Acrobat Reader] in Step 3 and install the program.

# Connecting to the Computer to Load Images

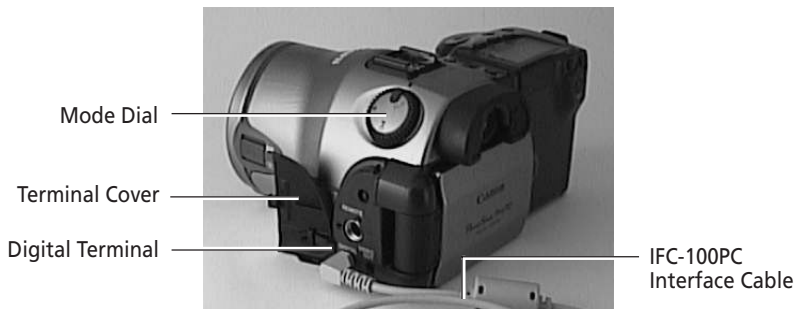
Now that you have finished installing the required software, connect the camera to the computer and try your hand at uploading images.

## Connecting to the Computer

Use the IFC-100PC interface cable to connect the camera to the computer.

- When connecting these devices, always ensure that the computer is shut off and the camera's mode dial is set to lock.
- Since transferring files between the computer and the camera is relatively power-intensive, it is advisable to power the camera with an AC power source.

- 1.** Turn off the computer and set the camera's mode dial to lock.
- 2.** Open the camera's terminal cover and connect the IFC-100PC interface cable to the digital terminal.



- 3.** Connect the other end of the cable to the computer's serial port (COM port).



- 4.** Turn on the computer.
- 5.** Set the camera's mode dial to PC.

## Precautions to Observe while Connected

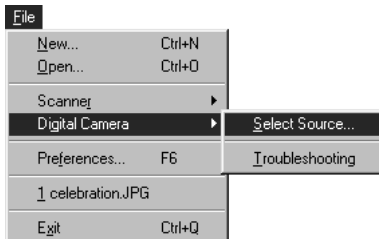
- Do not turn the camera's mode dial or disconnect the interface cable while the camera is connected to the computer.
- Before disconnecting the interface cable, ensure that you turn off the computer and set the camera mode dial to lock.

## Loading Images with TWAIN-Compliant Application Programs

Use the TWAIN Driver to load images into TWAIN-compliant applications, such as PhotoImpact and ZoomBrowser. The TWAIN Driver is a driver program that loads into the computer's memory so that it can be used from within TWAIN-compliant applications. Start the TWAIN Driver from within the application program and load the image data shot by a PowerShot Pro70. Since the TWAIN Driver does not have a function for saving images, use the application program to save the loaded images.

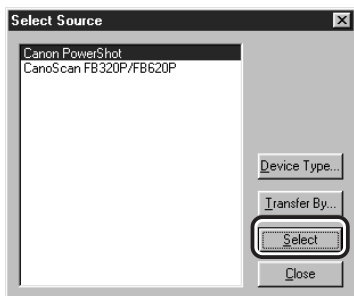
The following example demonstrates the procedures for using the TWAIN Driver with PhotoImpact. The procedures for other applications may vary slightly.

1. Start PhotoImpact.
2. Choose [File], [Digital Camera] and [Select Source].



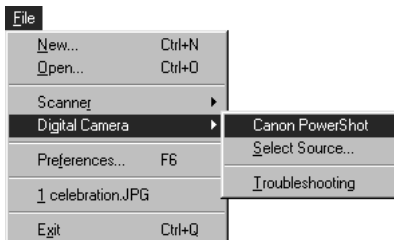


- Click [Canon PowerShot] followed by the [Select] button.



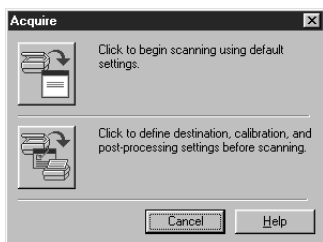
This will set the TWAIN Driver as the data source until you change it. You can skip steps 2 and 4 the next time you load images from the camera.

- Choose [File], [Digital Camera] and [Canon PowerShot].



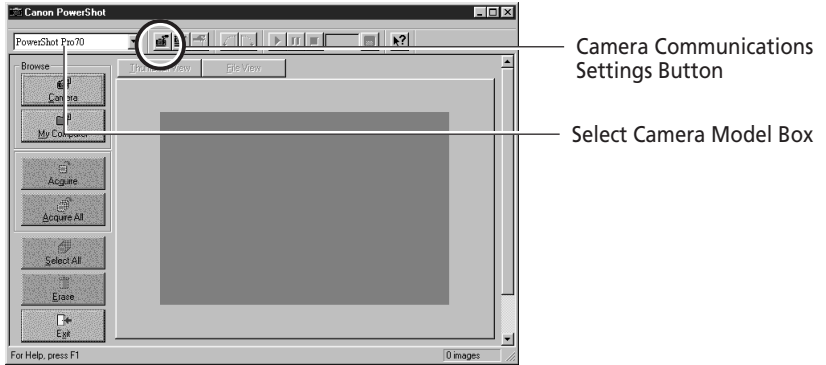
The Acquire dialog will display.

- Click the [  ] button.



The TWAIN Driver window will display.

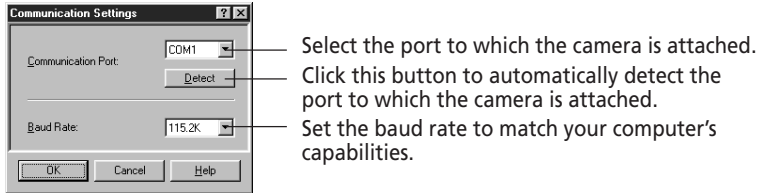
**6.** Click the [Camera Communication Settings] button.



- Confirm that PowerShot Pro70 is displayed in the Select Camera Model box. If it is not, click the box's arrow and select [PowerShot Pro70] from the list.
- Please refer to page 18 for a guide to the TWAIN Driver window. The Communication Settings dialog will display.

**7.** Set the port and baud rate settings and click the [OK] button.

This will set the communication settings for the camera. You can skip steps 6 and 7 the next time you load images from the camera.



**8.** Click the [Camera] button.



The thumbnails of the images on the camera's CF card will display.

A window enabling you to select between CF cards will display if there are two CF cards installed in the camera. After you have selected a CF card slot, the thumbnails of the images on that card will display. To change the selection, press the [Camera] button and select the other CF card.

**9. Click the thumbnail of the image you wish to load.**

The clicked thumbnail will become selected, which is indicated by the pale gray frame around the image.



- To select multiple images, press and hold the [Ctrl] key while clicking successive images.
- To select consecutive images, click the first image, then press and hold the [Shift] key while clicking the last image in the series.

**10. Click the [Acquire] button.**

The selected image(s) will load into PhotolImpact.

**11. Click the [Exit] button.**

The PhotolImpact window will display the image(s). Use PhotolImpact's [Save] command under the [File] menu to save the images to disk.

For instructions regarding the steps after loading images, refer to the user's manual for PhotolImpact.

## ■ The TWAIN Driver Window

**Rotate 90 Degrees Button**  
Rotates the selected image 90 degrees to the left or right.

**Sound Annotation Buttons**  
These buttons are enabled when an image associated with a sound annotation is selected.

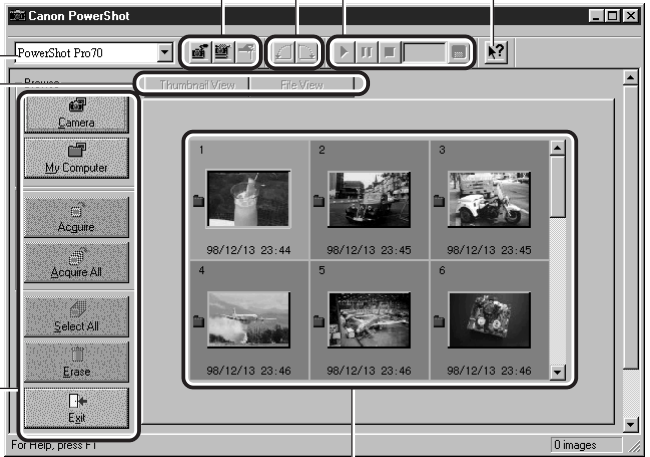
**Settings Buttons**

**Help Button**


**Select Camera Model Box**  
Selects the model of the camera from the images will be loaded. Confirm that PowerShot Pro70 is displayed in this box.

**Change Display Button**

**Main Buttons**  
Buttons for the main functions, such as Acquire and Exit.




**Thumbnail Display Area**

Press F1 for Help topics regarding the use of each part of the window. Pressing the [ ? ] button changes the cursor into the  shape and provides context-sensitive information regarding the part of the window on which you click.

### To Listen to a Sound Annotation

The PowerShot Pro70 is equipped with a function that allows you to record sound annotations and associate them with images. You can play these annotations with the TWAIN Driver as well as save them as separate files.

The  mark will display beside images associated with sound annotations. The sound annotation buttons will become enabled when such images are selected.



**Save Sound Annotation Button**  
Saves the sound annotation as a WAVE file.

**Remaining Time Indicator**  
Displays the seconds remaining in a sound annotation in real-time.

**Stop Button**  
Stops the replay of a sound annotation.

**Pause Button**  
Temporarily pauses the replay of a sound annotation.

**Play Button**  
Plays a sound annotation associated with an image.

# Loading Images Directly from a CF Card

If your computer is equipped with a PC card slot or PC card reader, you may wish to purchase the optional PCMCIA card adapter so that you can load images directly from a CF card onto your computer.

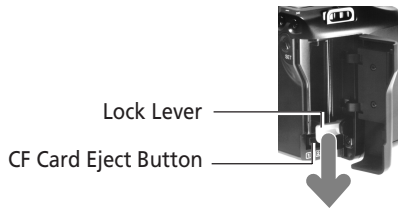
## Installing the CF Card

---

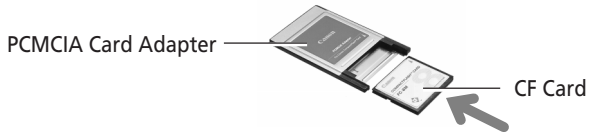
1. Set the camera's mode dial to lock.
2. Slide open the CF card slot cover in the direction of the arrow.



3. Open the lock lever, press the CF card eject button and remove the CF card.



4. Place the CF card in the optional PCMCIA card adapter.



5. Insert the PCMCIA card adapter in the computer's PC card slot or PC card reader.

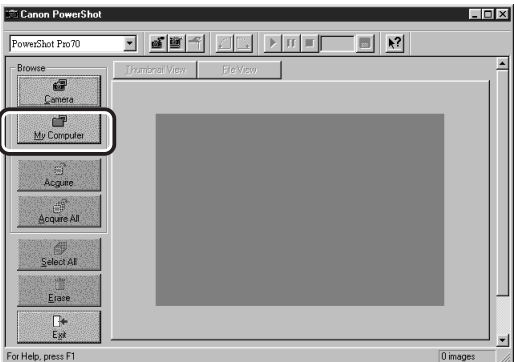


## Precautions to Observe while Connected

- Do not remove the CF card or turn off the PC card reader while data is being loaded from or written to the CF card. Doing so may corrupt the CF card data.
- Always complete the shut down operations on the computer for the PCMCIA card before removing the PCMCIA card adapter from the PC card slot.

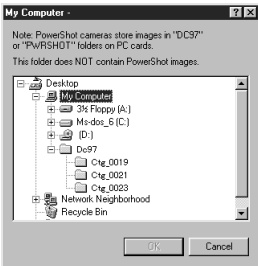
## Loading Images with TWAIN-Compliant Application Programs

1. Start the TWAIN Driver according to steps 1 to 5 on pages 14 and 15. Click the [My Computer] button.



The Computer dialog will display.

2. Select the drive containing the CF card and the [DC97] folder. Click the [OK] button.



The image data from the CF card will display. For the remaining procedures, start from Step 9 on page 17. You will select images and click the [Acquire] button.

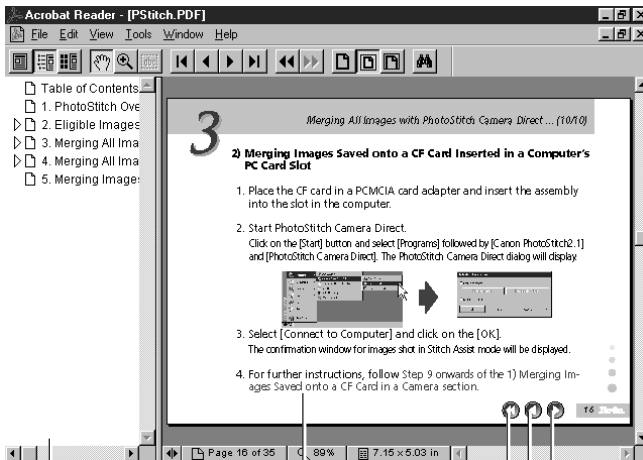
# How to Read the Quick Start Guides for Application Programs

The PowerShot Solution CD-ROM contains quick start guides, electronic manuals in the form of PDF files, that provide an overview and basis operating instructions for each software program (There is no quick start guide for the TWAIN Driver. Please refer to its Help file.) The quick start guides can be displayed and read with the following procedures.

The Adobe Acrobat Reader program is required for displaying the quick start guides.

1. Click the Windows [Start] button on the taskbar, select [Programs] and chose the [Quick Start Guide] option from the submenu for the application program under consideration.

A window similar to that below will display. Read the Help topics that will display whenever you click a button or an item from the index.



**Index**  
The selected item will display

**Link (in red)**  
Jump to a page with a related topic

**Display Next Page**

**Display Previous Page**

**Return to Original Page**

Use this to return to the original page after you have jumped to a new page using a link.

Please refer to the Help file for Adobe Acrobat Reader for more instructions on how to use this program.



## Chapter 2

# Loading Images onto a Macintosh

This chapter introduces the application programs for Macintosh that are contained on the PowerShot Solution CD-ROM. In addition to explaining how to install the software, it describes the techniques for loading images onto the computer.

# The Software Programs

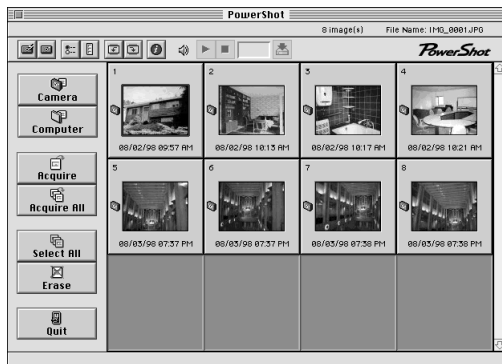
## Loading Images from a Digital Camera onto a Computer

### Plug-In Module

Driver software is required to transfer image data from your camera so that it can be processed and edited on your computer. The PowerShot Pro70 software package includes a Plug-In Module for Macintosh that serves this purpose.

The Plug-In Module can be used with Adobe Photoshop, Adobe PhotoDeluxe and TimeTunnel to load images directly into the application program from a PowerShot Pro70.

TimeTunnel is provided on the PowerShot Solution CD-ROM as an application program compatible with the Plug-In Module.



## Searching for Images Using the Shooting Date/Time as a Clue

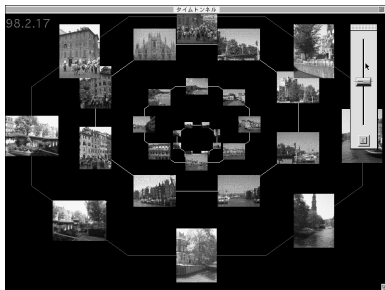
### PowerShot Utilities TimeTunnel

"I'd like to find that photo. Lets see... Maybe it was last summer..."

"I want to find that picture of that scene we saw on the third or fourth day of our trip two years ago..."

TimeTunnel is the browser utility that makes such searches possible. When you shoot an image with your PowerShot Pro70, it automatically records the date and time of shooting. TimeTunnel uses this data to organize and display tiny versions of your images, called thumbnails, in chronological order on rings so that you can easily search and find specific images. As you watch the

images scroll past on the screen, you receive the impression of being in a time tunnel. When you find the target thumbnail, all you need do is double-click it to view the original image.



## Merging Several Images to Create a Panorama

### PhotoStitch

Ever tried to capture a panoramic scene with a camera only to find it doesn't fit a single frame? Or had difficulty photographing a document so it fits a single frame and can still be read?

PhotoStitch is the powerful application program that remedies these situations, allowing you to capture an entire scene and assemble legible photographic documents. Using PhotoStitch, you can create one large image by merging several images or documents photographed in horizontal or vertical sequences, or in a matrix format.



# Installing the Software

Installing the software contained on the PowerShot Solution CD-ROM is the first procedure to complete before you can start loading images onto your computer.

## Computer System Requirements

---

Your computer system must satisfy the following requirements to operate the software.

Operating System:	Mac OS 7.5.3 or higher QuickTime 2.1 or higher
CPU:	68LC040 or higher (68K) or Power Macintosh (PPC)
RAM:	24 MB or more (32 MB or more recommended)
Free Disk Space:	Plug-In Module 2.3: 15 MB or more TimeTunnel 1.6: 25 MB or more PhotoStitch 1.5/2.2: 30 MB or more
Monitor:	640 x 480 pixels, 256 colors or more (1,024 x 768 pixels, 32,000 colors or more recommended)

- CD-ROM Drive is required for software installation
- QuickTime Version 3.0 or higher or QuickTime Version 2.5 and the QuickTime VR Extension 2.0.1 or higher are required to save PhotoStitch images in the QuickTime VR format.
- Plug-In Module 2.3 has been confirmed compatible with Photoshop 3.0 and higher versions.

## Installation Procedures

---

The following programs can be installed from the PowerShot Solution CD-ROM.

### • **Photoshop Plug-In Module 2.3**

This program must be installed to load images into Photoshop and other image editing programs.

### • **TimeTunnel 1.6**

### • **PhotoStitch 2.2 (PPC)/1.5(68K)**

### • **Adobe Acrobat Reader**

Install this program if it is not already installed on your computer to read the electronic manuals for each application program (p. 24).

1. Place the CD-ROM in the computer drive.
2. Double-click the [PowerShot] icon.

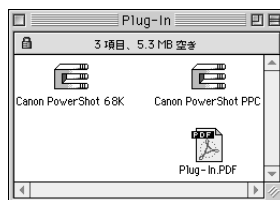


PowerShot

3. Copy the required software.

### Plug-In Module

The [Plug-In] folder contains two versions of the Plug-In Module: [Canon PowerShot PPC] for Power PC models, and [Canon PowerShot 68K] for 68K models. Copy the option appropriate to your computer system to the [Import/Export] folder, which is nestled inside the Photoshop [Plug-ins] folder.



Copy the Plug-In Module Quick Start Guide to a folder of your choice on your hard drive.

### TimeTunnel

Open the [TimeTunnel] folder and double-click [Installer]. Follow the instructions suggested by the installer. The TimeTunnel Quick Start Guide will be automatically copied to your hard disk by the installer.



### PhotoStitch

Open the [PhotoStitch] folder and double-click [Installer]. Follow the instructions suggested by the installer. The PhotoStitch Quick Start Guide will be automatically copied to your hard disk by the installer.



### About Adobe Acrobat Reader

An electronic manual for each program that explains the basic functions and procedures has been provided as a PDF file that can be read by Adobe Acrobat Reader. If this program is not already installed on your computer, open the [Acrobat] folder and double-click [Installer] to copy the program to your hard disk.

# Connecting the Camera and Computer

Now that you have finished installing the required software, connect the camera to the computer and try your hand at uploading images. Use the IFC-100MC interface cable to connect the camera to your Macintosh.

- When connecting these devices, always ensure that the computer is shut off and the camera's mode dial is set to lock.
- Since transferring files between the computer and the camera is relatively power-intensive, it is advisable to power the camera with an AC power source.

1. Turn off the computer and set the camera's mode dial to lock.
2. Open the camera's terminal cover and connect the IFC-100MC interface cable to the digital terminal.



3. Connect the other end of the cable to the computer's modem port or printer port.



- 
4. Turn on the computer.
  5. Select [Chooser] from the [Apple] menu and set AppleTalk to [Inactive].
  6. Set the camera's mode dial to PC.

## Precautions to Observe while Connected

---

- Do not turn the camera's mode dial or disconnect the interface cable while the camera is connected to the computer.
- Before disconnecting the interface cable, ensure that you turn off the computer and set the camera mode dial to lock.

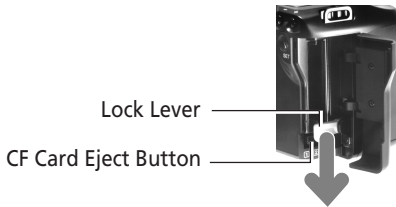
# Loading Images Directly from a CF Card

If your computer is equipped with a PC card slot or PC card reader, you may wish to purchase the optional PCMCIA card adapter so that you can load images directly from a CF card onto your computer.

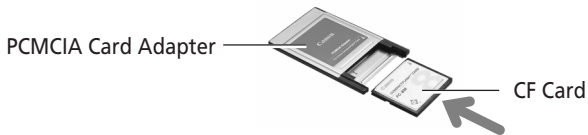
1. Set the camera's mode dial to lock.
2. Slide open the CF card slot cover in the direction of the arrow.



3. Open the lock lever, press the CF card eject button and remove the CF card.



4. Place the CF card in the optional PCMCIA card adapter.



5. Insert the PCMCIA card adapter in the computer's PC card slot or PC card reader.

## Precautions to Observe while Connected

- Do not remove the CF card or turn off the PC card reader while data is being loaded from or written to the CF card. Doing so may corrupt the CF card data.
- Always complete the shut down operations on the computer for the PCMCIA card before removing the PCMCIA card adapter from the PC card slot.

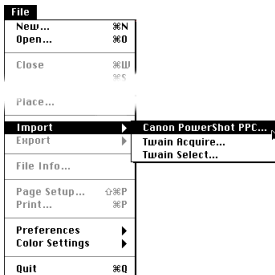


# Loading Images into Application Programs

Use the Plug-In Module to load images shot with your PowerShot Pro70 into an application program, such as Photoshop or TimeTunnel. The Plug-In Module is a driver program that is used in conjunction with graphics application programs. Start the Plug-In Module from within the application program and load the images from the PowerShot Pro70. Since the Plug-In Module does not have a function for saving images, use the application program to save the loaded images.

The following example demonstrates the procedures for using the Plug-In Module with Photoshop. The procedures for other applications may vary slightly.

1. Start Photoshop.
2. Choose [File], [Import] and [Canon PowerShot PPC] or [Canon PowerShot 68K].



The Plug-In Module window will display (next page).

3. Read the images on a CF card in a camera or PC card slot and load selected images into Photoshop.

Please read the Plug-In Module Quick Start Guide for detailed instructions for these procedures.

## ■ Plug-In Module Window

**Image Buttons** —

**Settings Buttons** —

**Use these to read the images on a CF card in a camera or PC card slot.**

**Use these to load images.**

**Closes the Plug-In Module.**

**Sound Annotation Buttons**  
These buttons are enabled when an image associated with a sound annotation is selected.

**Hints about operations and buttons are displayed here.**

**Thumbnail Display Area**  
Thumbnails will display in this area when the images from a CF card in a camera or CF card slot are read.

### To Listen to a Sound Annotation

The PowerShot Pro70 is equipped with a function that allows you to record sound annotations and associate them with images. You can play these annotations with the Plug-In Module as well as save them as separate files.

The mark will display beside images associated with sound annotations. The sound annotation buttons will become enabled when such images are selected.

The sound annotation buttons will not appear when the thumbnail display area is set to the column mode. To operate these buttons, switch the display area to the matrix mode.



**Save Sound File Button**  
Saves the sound annotation as an AIFF format file.

**Remaining Time Indicator**  
Displays the seconds remaining in a sound annotation in real-time.

**Stop Button**  
Stops the replay of a sound annotation.

**Play Button**  
Plays a sound annotation associated with an image.

# How to Read the Quick Start Guides for Application Programs

The PowerShot Solution CD-ROM contains quick start guides, electronic manuals in the form of PDF files, that provide an overview and basis operating instructions for each software program. The quick start guides can be displayed and read with the following procedures. The Adobe Acrobat Reader program is required for displaying the quick start guides (p. 27).

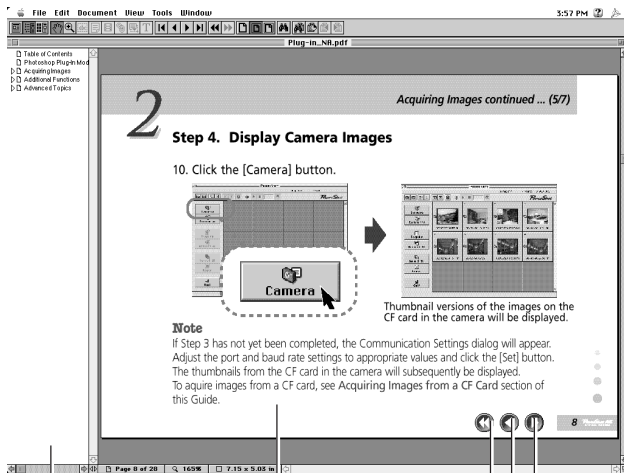
- 1 Double-click the [Quick Start Guide] icon of the application program under consideration.

The quick start guides for TimeTunnel and PhotoStitch can be found within their respective folders.



PDF ICON

A window similar to that below will display. Read the Help topics that will display whenever you click a button or an item from the index.



**Index**  
The selected item will display

**Link (in red)**  
Jump to a page with a related topic

**Display Next Page**

**Display Previous Page**

**Return to Original Page**  
Use this to return to the original page after you have jumped to a new page using a link.

- Please refer to the Help file for Adobe Acrobat Reader for more instructions on how to use this program.

# Canon Customer Support

## NORTH AMERICA

### **Canon Computer Systems, Inc.**

#### **Canon U.S.A., Inc.**

Computer Systems Customer Care Center

Phone (US): 1-800-423-2366 (Automated Support. 24 hours/day, 7 days/week)

#### **Canon Canada Inc.**

Computer Systems Customer Care Centre

Phone (Canada): 1-800-263-1121 (24 hours/day, 7 days/week)

## EUROPE

### **Canon (UK) Ltd.**

Helpdesk

Tel No.: 0990 143 723 (Calls may be recorded.) Fax No.: 0990 143 340 BBS No.: 0990 143 350

### **Canon S.A.V. Photo Video France**

Hotline: (1) 49 04 01 00 Télécopie: (1) 49 04 01 01

### **Canon Deutschland GmbH**

Canon-Hotline-Service

Customer-Support: 02151/349-555 Telefax: 02151/349-588

Info-Desk: 02151/349-566 Info-Desk Fax: 02151/349-599 Mailbox: 02151/349-577

### **Canon Italia S.p.A.**

Pront Canon: 02 66984383

## OCEANIA

### **Canon Australia Pty. Ltd.**

Info-Line: (02) 9805 2864

### **Canon New Zealand Ltd.**

Info-Line: 0900-522666

## ASIA

### **Canon Hong Kong Co., Ltd.**

Phone: 852-2739-0802 Fax: 852-2739-6428

### **Canon Singapore Pte. Ltd.**

79 Anson Road, #09-01 / 06, Singapore 079906

Phone: (65) 532 4400 Fax: (65) 221 7577

### **Canon Marketing Services**

2 Alexandra Road, #04-01A, Delta House, Singapore 159919

Phone: (65) 273 5311 Fax: (65) 273 6786

### **Canon Marketing (Malaysia) Sdn. Bhd.**

13A Jalan 219, 46100 Petaling Jaya, Selangor D.E., Malaysia

Phone: (60) 757 7210 Fax: (60) 757 7832

### **Canon Marketing (Thailand) Co., Ltd.**

2nd Floor, Indosuez House, 152 Wireless Road, Bangkok 10330 Thailand

Phone: (662) 651 4000, Ext. 454 Fax: (662) 651 4095

# Ulead Customer Support

For : Ulead PhotoImpact 4.0

## **INTERNATIONAL**

### **Ulead Systems, Inc. (Taiwan)**

Tel: +886-2-8787-6740 Fax: +886-2-8787-6741 E-mail: support@ulead.com.tw

### **Ulead Systems, Inc. (USA)**

Tel: +1-310-523-9393 Fax: +1-310-523-9399 E-mail: support@ulead.com

### **Germany Ulead Support Center**

Tel: +49-2602-917-329 Fax: +49-2602-917-327 E-mail: uleadger@aol.com

### **France Center d'assistance Ulead**

Tel: +33-1-30-76-10-30 Fax: +33-1-30-76-22-87 E-mail: graphics@imagnet.fr

### **BIT (UK) Limited**

Tel: +44-1420-83811 Fax: +44-1420-80657 E-mail: 100111.3424@compuserve.com  
Internet: www.bit.co.uk

World Wide Web <http://www.ulead.com>

**Canon**